

A New Lease of Life

This striking Georgian house in Broughshane has been transformed into a welcoming family home full of life and colour for Frank, Georgina and their four children.

PHOTOGRAPHY BY ANDREW VAUGHAN.

As soon as they set eyes on this property, Frank and Georgina knew they had found their perfect family home. 'With four children, we had outgrown our previous house and knew we needed more space. Coming through the gates and up the winding driveway towards this house, I instantly knew it was going to be perfect for us,' comments Georgina, who goes on to say, 'although derelict and in need of a lot of work to bring it back to life, I knew it had huge potential and would be a great family home.'



The original house on this site dates back to the 1770s and while the couple would have loved to retain the original, the building was too far gone. 'With wet rot and dry rot throughout we had no choice but to knock the existing house down. However, we took a lot of photos to replicate this grand Georgian property the best we could,' explains Georgina. 'We measured the size of the original windows and copied these exactly as they had once been and even the staircase was inspired by what had been here previously,' she adds.

Having bought the property in April 2012 it took until September 2018 before Frank, Georgina and their children Otis, Zillah, Arabella and Austin actually moved in. 'We

temporarily moved to a house nearby, allowing us to oversee all of the building work and interior fit out, it also allowed us to get the children settled in school. Our eldest, Otis was starting P1 when we bought the house so I thought it best to get him started at the local primary school, however, I had a 20 minute journey to get him there, so moving closer made sense all round.'

With planning approved in October 2015, building started in May 2016. Frank and Georgina worked with local builder Andrew Hamilton Construction, who they had worked with before and in fact, it had been Andrew who had introduced them to the property in the first place.

As the build progressed and tasked with electrical decisions, Georgina realised that it might be time to bring in an expert that could guide her through this stage of the build. 'It was when tasked with finalising the electrical points for our electrician that we realised we could do with some expert help to ensure we got it right,' says Georgina. 'So we put electrical planning and interior design into Google and came across Kris Turnbull Interiors. Looking at their portfolio we knew they could deliver exactly what we were looking for when it came to the layout and décor of our home.

'In our first home I had a pink cloakroom and splashes of colour everywhere. I probably developed my taste for

colour there, but here I wanted to have someone with the vision to combine my love of colour and pattern and help it flow seamlessly throughout the whole house. With Kris' help and encouragement I have managed to achieve exactly what I was hoping for, a home full of colour and personality,' adds Georgina.

Knowing that Georgina liked colour and nature, Kris not only recommended painting the kitchen a striking, dramatic blue, but also in the family living area he continued to add colour and interest with the Hermes curtains, Christian Lacroix cushions and bespoke rug which he designed inspired by the dress jewellery from the carnivals in Brazil.



‘I was sending lots of examples of the interiors I liked to Kris and he picked up that I seemed to be drawn towards darker kitchens, so I settled upon Crown’s Ink Blue for the cabinets. As for the large rug in our family living area, I absolutely love it,’ says Georgina. ‘It is so colourful and my son likes to use the black band as a race track for his toy cars! We also have a large, bespoke 360 view stove from Wilsons Fireplaces in this area. It is a fantastic addition and really helps to add a

cosy ambience especially when lit on cold winter days.’

At the other end of the kitchen, away from her son’s Hot Wheels, although still picking up the heat of the large stove, Georgina has a seating area which she uses during the day when the kids are in school. ‘If my mum is around we’ll make a coffee and sit in peace, away from all of the kids’ mess at the other end of the kitchen.’ This area is also full of colour with the velvet armchairs, Christian Lacroix cushions

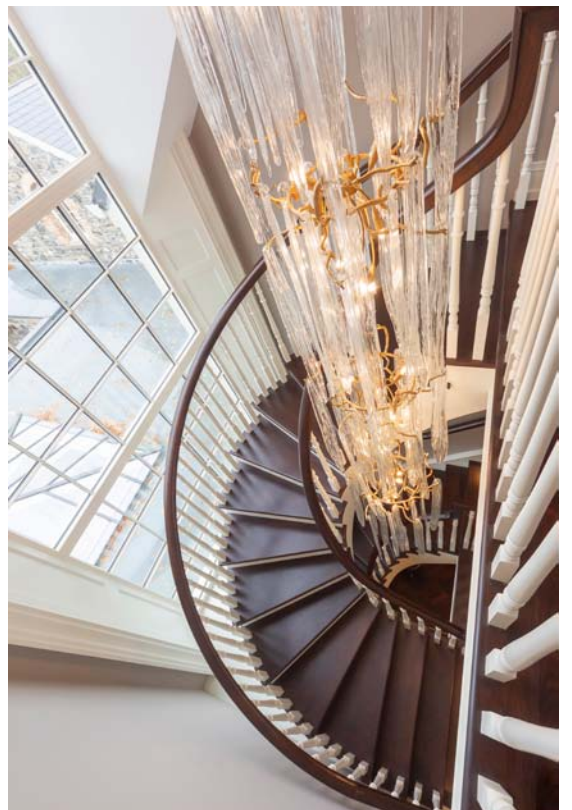
and a custom designed rug.

Adjoining here is another orangery with a bespoke swing seat. ‘I can remember phoning Kris and asking if he could source me a swing seat for in here. I had been for a spa at the Galgorm and sitting in their swing seat, I thought it might be a nice to have one at home.’

Although this area of the house was originally intended to be a space where the kids would do their homework at the

dining table and enjoy reading on the swing seat, Georgina finds that more often that not the kids like to be where she is and will do their homework at the large kitchen table instead.

Tucked away behind this orangery is the garage, which leads directly into the house. It was because of this garage and their love of symmetry that the couple decided to add on a second orangery. As Georgina explains, ‘The original house had one orangery, but when rebuilding we decided to add a



second one, which would not only hide an unattractive garage from view, but would also give a symmetrical look to the front of the house. The original house had a glass lean-to extension to enlarge the kitchen space and we really liked this idea, so when rebuilding we knew the orangeries would work to let in

lots of natural light and help to connect this large rear open-plan extension.

‘The back of the house is big, and I did worry that we would all get a bit lost in it, but everyone who visits comments on how homely it is. Kris and his team took the time to plan

this space out in line with our lifestyle and it works perfectly. I know as the kids get older it will continue to adapt to our needs and how we live in this part of the house.’

Also on the ground floor towards the front of the house is the drawing room, which allows for a more formal living

space. The elegant colours used by Kris for this room embrace a change of direction into an adult-only living space, but still reflect Georgina’s love of nature with the earthy colours used and details such as the handpainted Chinoiserie wallpaper on silk by Fromental and feather printed cushions. Detailing



in here includes the curved panelling on the ceiling which was designed by Kris Turnbull Studios and then cleverly constructed by the site manager, Billy.

The couple also have a study/office here which has proved invaluable over the last few months. 'Although originally my office,' explains Georgina, 'Frank has been able to work from home in here during lockdown. It's worked really well for him and it's great to have a separate room like this and our drawing room that allow us space away from the children when needs be,' she adds.

Speaking of having a quiet space to retire to, Frank and Georgina worked with Kris to design a master suite on the first floor. 'We designed all four bedrooms exactly the same on the second floor above so their could be no fighting amongst the children about who had the bigger bedroom,' laughs Georgina, who goes on to say, 'so we decided to create a master suite on the first floor which is divided up into our bedroom, a bathroom and a dressing room. The colours used up here are soft and luxurious and our gold freestanding bath adds a bit of glamour.'

Last, but by no means least as we take in all of the striking décor within this home, leading up to the bedrooms from the ground floor is a stunning staircase designed by Old Town Joinery in Bellaghy. 'We were inspired by the original staircase, but this one is even more impressive and really complements the house. We love it and the craftsmanship is just amazing. Kris also drew up the complementary light fitting which he had produced by a Portuguese design house.'

'We love spending time in our home, it works so well for us as a family,' comments Georgina. 'Before we would have

gone on holiday to escape being on top of each other in our previous house, now we find it hard to go away because everything we need is here and we all enjoy spending time together in our own home.' 🏠

If you have any questions or queries relating to this reader's home please contact Heather Withers. Phone +44 (0) 28 9147 3979 or email hwithers@ihil.net